

**For your health!
Category "G"
filter material**



**DC-1000/1300/1800
Dust collectors**

- Filter efficiency of 99.5 % for fine 0.2–2 micron dust through use of high-quality category "G" filter material
- Industrial quality motor and spe-

- cially designed blower wheel for maximum performance
- Casters allow for total mobility
- Dust collector bags come with an elastic band for easy installation
- Extensive line of accessories to handle the toughest dust collection jobs
- Filter cartridges (optional) will filter out the finest dust
- Rugged housing design
- Standard 2.5 meter hose at all models

Stock number 230 V	10000300 M	10000320 M	10000330 T
Stock number 400 V			
Model:	DC-1000	DC-1300	DC-1800
Collector bag capacity in litres:	75	90	175
Hose diameter:	100 mm	100 mm	140 mm
Air flow:	1000 m ³ /h	1300 m ³ /h	1800 m ³ /h
Vacuum pressure:	1400 Pa	1750 Pa	1750 Pa
Overall dimensions:	835 x 450 x 1507 mm	882 x 479 x 1623 mm	1090 x 580 x 2090 mm
Motor power output:	1 HP/S ₁ 100%	1 HP/S ₁ 100%	2 HP/S ₁ 100%
Motor power input:	1.76 HP/S ₆ 40%	1.76 HP/S ₆ 40%	3.8 HP/S ₆ 40%
Weight:	21 kg	24 kg	45 kg



Stock number 10000312
PVC-hose transparent,
Ø 100 mm, length 5 m.



Stock number JW 1019 - Jet splice fitting,
Ø 100 mm to connect full sections of hose for
longer runs – anti-static



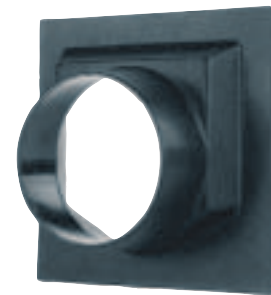
Stock number JW 1015 - Y-fitting, Ø 100 mm
Allows you to gradually split off the main line
Stock number 200515 - Y-fitting, Ø 100 mm with
60-mm branch for use in top collection component
with circular saws



Stock number JW 1017 - 90° elbow fitting,
Ø 100 mm
Necessary when duct work changes direction



Stock number JW 1013 - T-fitting, Ø 100 mm
For use where design limitations will not allow
use of a "Y"



Stock number JW 1005 □ 355 x 355 mm
Stock number JW 1001 □ 210 x 210 mm
Stock number JW 1010 □ 158 x 158 mm
Universal dust hood, Ø 100 mm
Specially designed for shop use



Stock number JW 1142
Aluminium blast gate, Ø 100 mm
To regulate or block off air flow to a given machine



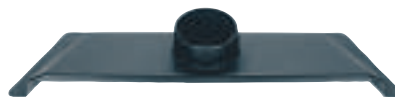
Stock number JW 1000, Reducer - Ø 100/57 mm
Allows you to step down from larger main line to
the machine to increase air velocity



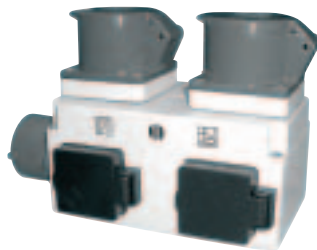
Stock number JW 1022
Galvanized hose clamp, Ø 100 mm
Used to connect dust collection hoses



Stock number JW 1047
Machine port, Ø 100 mm



Stock number JW 1003
Dust hood, Ø 100 mm
Designed to collect dust on large-surface floors



Stock number 10000340 - Automatic start

WARNING!

There is a fire or explosion hazard if
your dust collection system is not
properly grounded.



Stock number JW 1053 - Grounding kit
This kit contains 12 m of copper wire and all the
adapters to ground your system



- Stock number 10000310 - Filter cartridge for DC-1000 or DC-1300 dust collectors
- Stock number 10000311 - Replacement Collection Bag (set of 5 pcs) for DC-1000 or DC-1300 dust collectors
- Stock number 10000335 - Filter cartridge for DC-1800 dust collector
- Stock number 10000336 - Replacement Collection Bag (set of 5 pcs) for DC-1800 dust collector
- Stock number 848720 - Filter bags for DC-1000 or DC-1300 dust collectors
- Stock number 845692 - Filter bags for DC-1800 dust collectors